



Aquaculture

testing services

Aquatic Animal Health

Awanui Veterinary is New Zealand's leading provider of veterinary diagnostic testing and pathology services, with laboratories strategically located the length of the country. We are committed to providing innovative laboratory services and delivering service excellence to New Zealand's animal health professionals.

We offer a comprehensive range of aquatic animal health testing services including:

Microbiology

- Aerobic culture including:
Aeromonas, Lactococcus, Vibrio and Yersinia
- Microscopy
- Sensitivity testing

Haematology

- Complete blood counts
- Blood film examination
- Haemoglobin
- Haematocrit
- Plasma protein
- WBC count and differential

Biochemistry

- Salmon biochemistry panels, including:
Albumin, ALP, ALT, AST, bilirubin, calcium, chloride, cholesterol, CK, creatinine, GLDH, glucose, magnesium, phosphate, potassium, sodium, total protein, triglycerides, urea
- Lactate*
- Lipase

Endocrinology

- Cortisol
- TSH

Serology

- C-reactive protein*
- Haptoglobin*
- Prostaglandin*

Histopathology

- Full histology
- Gill histopathology
- Tissue processing

Necropsy

Molecular

- Freshwater and saltwater disease panels
- *Flavobacterium psychrophilum*
- *Lactococcus garvieae*
- NZ-Rickettsia-like organisms
- *Tenacibaculum maritimum*
- *Yersinia ruckeri*

*Non-routine testing

Our Expertise

Our network consists of four IANZ accredited laboratories located throughout New Zealand. With the largest team of veterinary pathologists, scientists and technical staff in the country, we provide an extraordinary range of experience and expertise across companion, production, equine, exotic, avian and aquatic pathology.

Throughout their extensive careers, many of our veterinary pathologists have developed special areas of interest and expertise. This allows us to offer clients a range of specialist pathology services including fish and aquatic, poultry and avian, wildlife and exotic, post-mortem and expert witness services.

Veterinary pathology services (ISO/IEC 17025:2017)

All of our laboratories are accredited to ISO/IEC17025:2017 for biological testing. This provides assurance that all diagnostic testing is carried out to the highest standard, producing results that can be trusted.

Export Testing (RLP live animal and germplasm – Palmerston North)

Awanui Veterinary was New Zealand's first privately owned laboratory to be accredited to carry out serological and microbiological testing for live animal and germplasm export. We continue to be accredited under the Ministry for Primary Industries' Recognised Laboratory Programme.

GLP and Research Services (OECD GLP – Christchurch)

Awanui Veterinary delivers bespoke testing solutions to local and international researchers from industry and academia alike. We offer a comprehensive range of toxicologic pathology, clinical chemistry and immunology testing accredited for compliance with the OECD standards of Good Laboratory Practice.

MPI Recognised Laboratory Programme (RLP – Dunedin)

Awanui Scientific has accreditation to MPI RLP and IANZ for analytical testing of various animal, food and feed products.

Innovation focus areas:

- Analytical chemistry and food microbiology for existing and new products
- Animal health testing
- Veterinary clinical trials: In the past year we have carried out testing many trials covering all scientific disciplines - aquaculture, animal surveillance, dairy, fertility, GLP clinical drug trials, milk culture and sensitivities, parasitology, trace element analysis and more.



Analytical Services

Awanui Scientific's laboratory testing services provide the results you need to optimise your production process and get your product to market quickly and economically. Our team of experts can assist with all your food testing requirements. We provide accurate results, with fast turnaround times using state-of-the-art equipment and methodology.

We offer a comprehensive range of analytical chemistry and microbiology testing including:

Microbiology

- Aerobic plate counts (APC)
- *Bacillus cereus* count
- *Campylobacter* detection
- *Clostridium perfringens* count
- *Escherichia coli* - count or detection
- Enterobacteriaceae
- Exposure plates - APC, yeast and mould
- Faecal coliforms (FC)
- Hygiene swab - counts, total grade, coliform
- *Listeria* sp. detection
- *Salmonella* sp. detection
- *Shigella* sp.
- *Staphylococcus* sp.
- Total coliforms (TC)
- Water panel - TC, FC, *E. coli*, SPC

Chemistry

- Ash
- Calcium
- Carbohydrates
- Chloride
- Cholesterol
- Collagen
- Energy
- Fat - crude / total
- Fibre - crude / dietary
- Free fatty acid
- Glucose
- Gluten
- Heavy metals
- Histamine
- Iron
- Lead
- Lipids
- Magnesium
- Mercury
- Mineral profiles
- Moisture
- Nitrogen
- Nutritional information profiles
- Particle sizing
- Pepsin digestibility
- Peroxide
- Phosphorus
- Potassium
- Protein
- Salt
- Saturated fat
- Selenium
- Sodium
- TVBN
- Vitamins A, B₁₂, E
- Zinc

Awanui Group

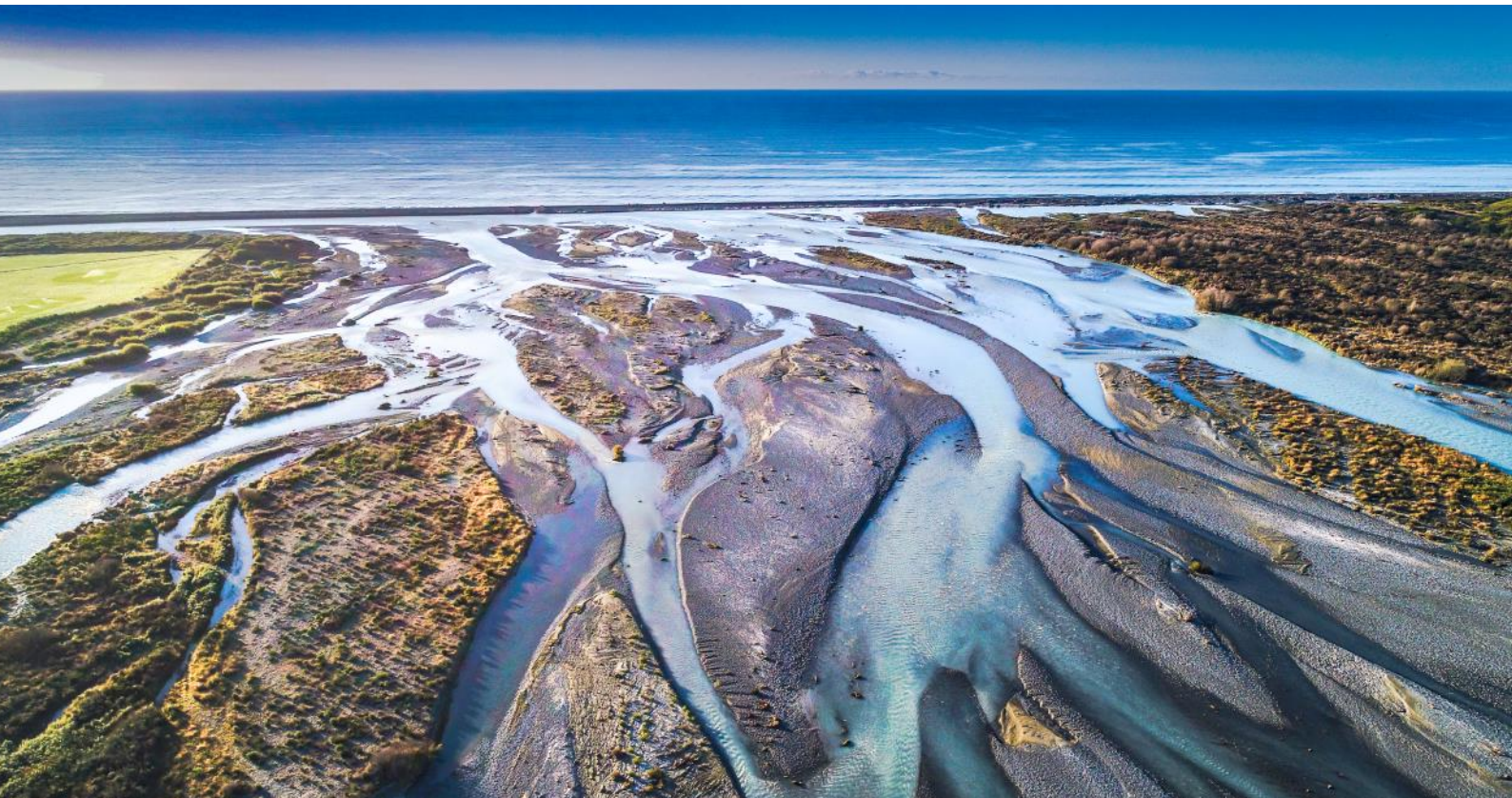
Awanui Veterinary and Awanui Scientific are part of the Awanui Group, the largest human and veterinary laboratory group in New Zealand, providing services to over 75% of the population in community and hospital settings.

We have a dedicated team of over 2,100 people across 25 IANZ accredited laboratories and more than 150 collection centres from as far north as Kerikeri to as far south as Invercargill. Our laboratories have achieved the highest standards of accreditation in their respective fields; IANZ, RLP and GLP.

We are proudly an Aotearoa New Zealand business with owners NZ Super Fund, Te Pūia Tāpapa and Ontario Teacher's Pension Plan sharing our vision for delivering innovative, patient-centred services to the people of Aotearoa for generations to come.

Like our nation's rivers, our laboratories and collection centres across the motu (country) intersect and join. We join together as Awanui (big river). The Awanui network gives us our unique approach. Our network gives us scale and allows us to share resources and skills. It ensures the timely flow of accurate and trusted diagnostic and analytical information when it's needed.

We have the capability and experience to deliver you a commercial advantage.



Our Locations

Auckland

37-41 Carbine Road, Mt Wellington, Auckland

T: 09 5744 701

E: Auckland.vetlab@awanuigroup.co.nz

Palmerston North

840 Tremaine Ave, Palmerston North

T: 06 356 7100

E: Palmerston.vetlab@awanuigroup.co.nz

Christchurch

7 Halkett Street, Christchurch

T: 03 379 9484

E: Christchurch.vetlab@awanuigroup.co.nz

Dunedin

Invermay Research Centre (Block A), Puddle Alley, Mosgiel, Dunedin

T: 03 489 4600

E: Dunedin.vetlab@awanuigroup.co.nz
sales@awanuiscientific.co.nz

Hamilton Logistics Hub

248 Grey Street, Hamilton

E: NI.orders@awanuigroup.co.nz

Call 0800 474 225 for the best service in aquatic analytical and animal health testing.

www.awanuiivets.co.nz ● www.awanuiscientific.co.nz