

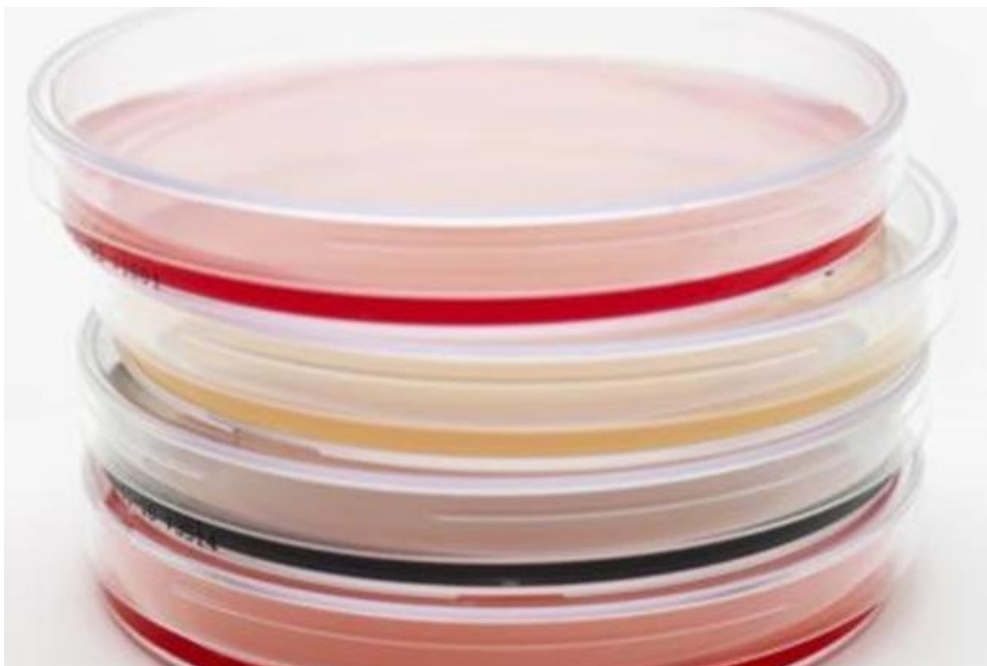
Exposure air plate method

Sample collection:

1. Wipe the horizontal surface on which the plate is to be placed.
2. Lay out agar plate base down. The base contains the agar and is smaller in circumference than the lid.
3. Remove lid to expose agar. Leave for 15 minutes.
4. Close plates and record on air plate sample sheet the location of the exposed plate.
5. Place numbered plates and recorded sheets in bags provided.
6. Place all information in the chilly bin, along with an ice pack.

Sending to laboratory:

- Send to the laboratory within 8 hours of sampling or hold at 4°C until ready to send.



Please refer to our current price book for sample types, test turn-around times and pricing. If you have any questions or would like any further information, please contact your local Awanui Scientific laboratory or Territory Manager.